



Since 1940

MG BROTHERS™

# Wall Street 4G\*

Premium Residential Layout

Near Bangalore International Airport, Off Express Highway, North Bangalore.



\*Global Identity Great Neighbourhood Green Environs Guaranteed Appreciation



# About us

MGB Group has established itself profoundly since its inception in 1940 at Yemmiganur. The MG Group has over time successfully ventured into various businesses such as Automobile Dealerships, Real Estates and construction spreading across Yemmiganur, Nellore, Vijayawada, Tirupati, Chittoor, Bangalore and Kurnool.



**M.R. Ramesh**  
Chairman

Stumpp, Schuele & Somappa (P) Ltd., B'lore  
MG Brothers Automobiles Pvt. Ltd., Nellore



**Stumpp,  
Schuele  
Somappa  
Pvt. Ltd**

Stumpp, Schuele & Somappa Pvt. Ltd., is a part of the M.G.Brothers Group established by the founder Late **Padmasree Machani Somappa** in the year 1960 at Madivala check post (Koramangala) Bangalore.

## Donate Blood - Save Life

"M.G.Brothers, fully conscious of its corporate social responsibility, conducts blood donation camps every year in its Passenger Car Division Show Room, Nellore with the



active participation of Indian Red Cross Society Team. On an average, at least 100 employees donate blood every time. In the above photo, the Managing Director Shri.M.R.Gangadhar, Shri.Sourab Gour - Joint Collector - Nellore District, Shri.M.G.Gopala Krishna, Joint

Managing Director are seen at the blood donation point in one of the camps. Shri.M.R.Gangadhar is the Vice Chairman of Indian Red Cross Society, Nellore Branch, since about 8 years".

# OUR SUCCESSFUL PROJECTS @ BENGALURU







## AMENITIES

- Compound wall with Main gate
- Asphalted Roads
- Electricity with street lighting
- Drinking water supply to individual sites from Over Head Tank and Borewell
- Underground Drainage System
- Landscaped Gardens
- Children park & Foot path
- Tree Avenue
- Round the clock security

## Uniqueness

- Prompt Service
- 5 years Maintenance
- Immediate Registration of Sites

## Bank Loan Facility

- **AXIS Bank**





# In the Vicinity of International Airport, Financial City, IT, BT, Hardware & Aerospace Park

Combined Layout Map of Bangalore HARDWARE, FINANCIAL CITY, IT, BT, Aerospace & SEZ Parks at DEVANAHALLI, BANGALORE NORTH  
 (Adjacent to Bangalore International Airport)

## B'lore will get 1,000-crore Financial City, says Pranab

TIMES NEWS NETWORK



Pranab Mukherjee

Bangalore: A large country like India requires regional financial centres. Union finance minister Pranab Mukherjee said on Sunday at the foundation stone laying ceremony of a financial city on the outskirts of Bangalore. "For a country of our size, emergence of regional financial centres can help in financial services becoming more equally distributed among the different regions of the country," he said.

figures among the top five states in credit-deposit ratio, while Bangalore ranks next only to Mumbai and New Delhi in terms of size of bank credit and deposit. The importance of Bangalore is corroborated by the income tax collections, as the city stands next only to Mumbai and Delhi," said Mukherjee. The proposed 50-acre Financial City will be developed over a period of three years at an investment of over Rs 1,000 crore. Space allotment letters have already been given to many banks and financial institutions including Canara Bank, Corporation Bank, Syndicate Bank, State Bank of Mysore, Indian Bank, and LIC.

### 'Increasing direct taxes sign of fiscal muscle'

Bangalore: The share of direct taxes in the country's income from taxes has touched 60%, confirming India's financial muscle.

"All this while, the contribution of direct taxes was low. The dependence on indirect taxes was very high. With the changed scenario now, the country's economy is on par with other developing and developed countries," Union finance minister Pranab Mukherjee said while inaugurating the state-of-the-art Direct Taxes Regional Training Institute (DTRTI) at Jalahalli earlier on Sunday. Reeling out statistics, Mukherjee said the revised budget estimate for the ongoing financial year has been fixed at Rs 5 lakh crore, which in itself spoke volumes about the size of the country's budgetary transactions. TNN

The financial city near Devanahalli in Bangalore is one of the first of its kind in India and will enable financial institutions to establish and run a variety of operations, and help meet regional financial demands better.

"Karnataka consistently

The project will be executed by IFCI Infrastructure Development Ltd, the country's first financial institution, set up in 1948. Banks and financial institutions will be able to carry out a wide range of support activities, including back-end operations, from the Financial City, said Anil Kumar Rai, CEO, IFCI.

## Pranab lays foundation for financial city near Bangalore

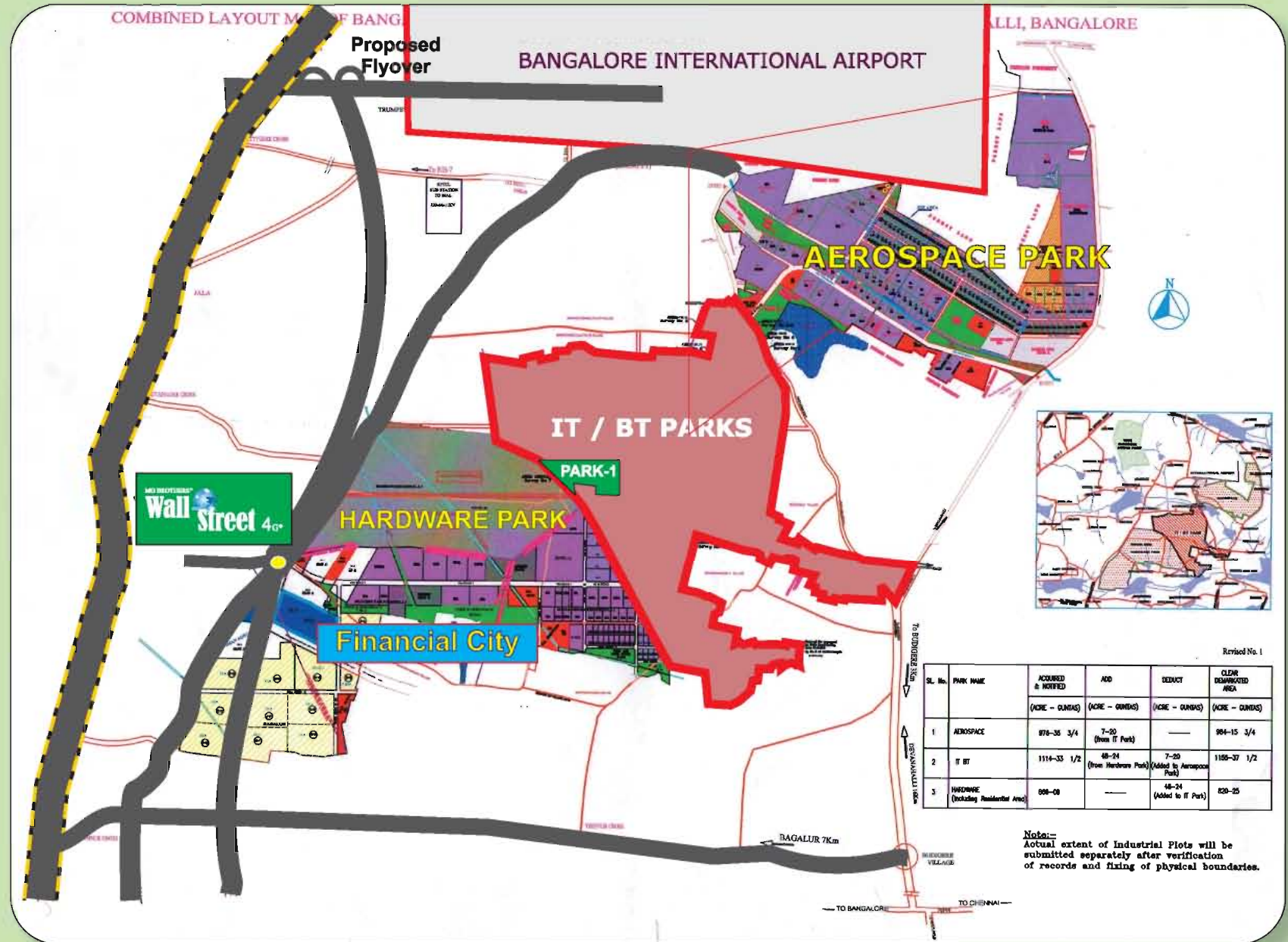


Bangalore, April 8 ( IANS ) : Finance Minister Pranab Mukherjee on Sunday laid the foundation stone for the country's first financial city being built by the state-run IFCI Infrastructure Development Ltd ( IDL) at the Hardware Park near the International Airport at Bagalur, about 30 kms from Bangalore.

"We are developing India's first financial city as a premium urban infrastructure in association with leading banks and Institutions on 50 acres of land, provided by the Karnataka government," IFCI Chief Executive and IDL Chairman Atul Kumar Rai said on the occasion.

The ambitious project is scheduled to be completed in three years.

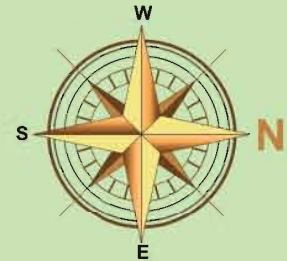
The layout of the financial city is based on Zen geomancy concept with effective circulation and activity patterns.



For more Information about potential around Bangalore International Airport  
[IDD.KAR.NIC.IN/Docs/Draft\\_study\\_report\\_potential\\_around\\_BIA.pdf](http://IDD.KAR.NIC.IN/Docs/Draft_study_report_potential_around_BIA.pdf)  
<http://itparksandsezinbangalore.blogspot.in/>



# Layout Plan



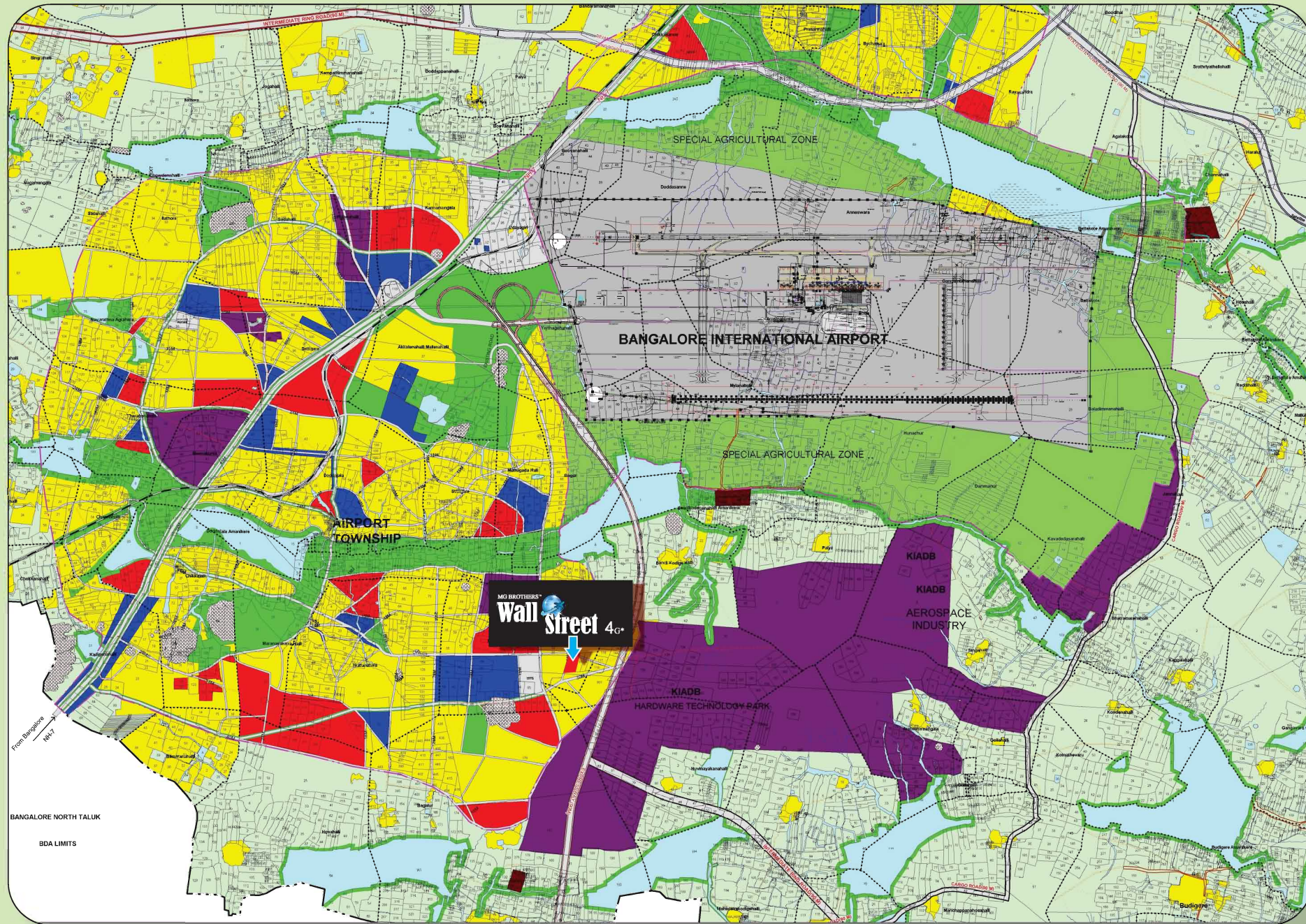
Sites No	Area
1	2347
2	2525
3	2530
4	2536
5	2542
6	2548
7	2554
8	2559
9	2565
10	2570
11	2576
12	2582
13	2587
14	2593
15	2570
16	2054
29	2684
30	1232
48	931
49	931
67	1469

TOTAL SITES DETAILS		
DIMENSION	SITE NUMBERS	TOTAL NO.
29.53' X 39.37'	31, 32, 33, 34, 35, 36, 37, 38, 39, 40, 41, 42, 43, 44, 45, 46, 47, 50, 51, 52, 53, 54, 55, 56, 57, 58, 59, 60, 61, 62, 63, 64, 65, 66,	34
39.37' X 59.06'	17, 18, 19, 20, 21, 22, 23, 24, 25, 26, 27, 28,	12
ODD SITES *	1, 2, 3, 4, 5, 6, 7, 8, 9, 10, 11, 12, 13, 14, 15, 16, 29, 30, 48, 49, 67,	21
TOTAL		67

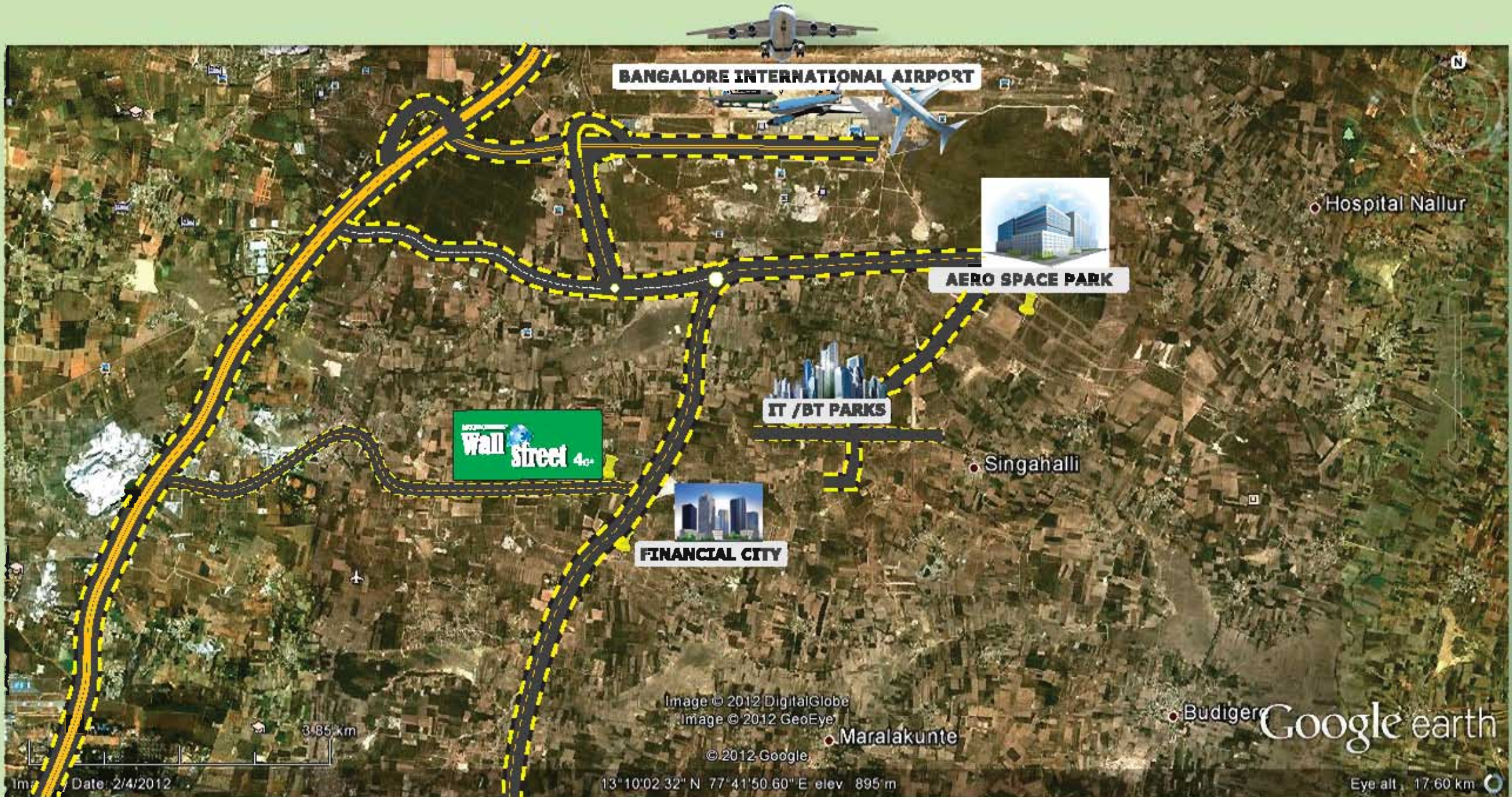
60% OF THE SITES RELEASED FOR REGISTRATION		
DIMENSION	SITE NUMBERS	TOTAL NO.
29.53' X 39.37'	31, 32, 33, 35, 36, 37, 42, 43, 44, 45, 46, 51, 52, 53, 55, 56, 57, 60, 61, 62, 63, 65, 66	23
39.37' X 59.06'	18, 19, 20, 21, 22, 24, 25, 27, 28,	09
ODD SITES *	3, 4, 5, 8, 9, 10, 11, 12	08*
TOTAL		40

40% OF THE SITES RETAINED WITH BIAAPA		
DIMENSION	SITE NUMBERS	TOTAL NO.
29.53' X 39.37'	34, 38, 39, 40, 41, 47, 50, 54, 58, 59, 64	11
39.37' X 59.06'	17, 23, 26	03
ODD SITES *	1, 2, 6, 7, 13, 14, 15, 16, 29, 30, 48, 49, 67	13*
TOTAL		27

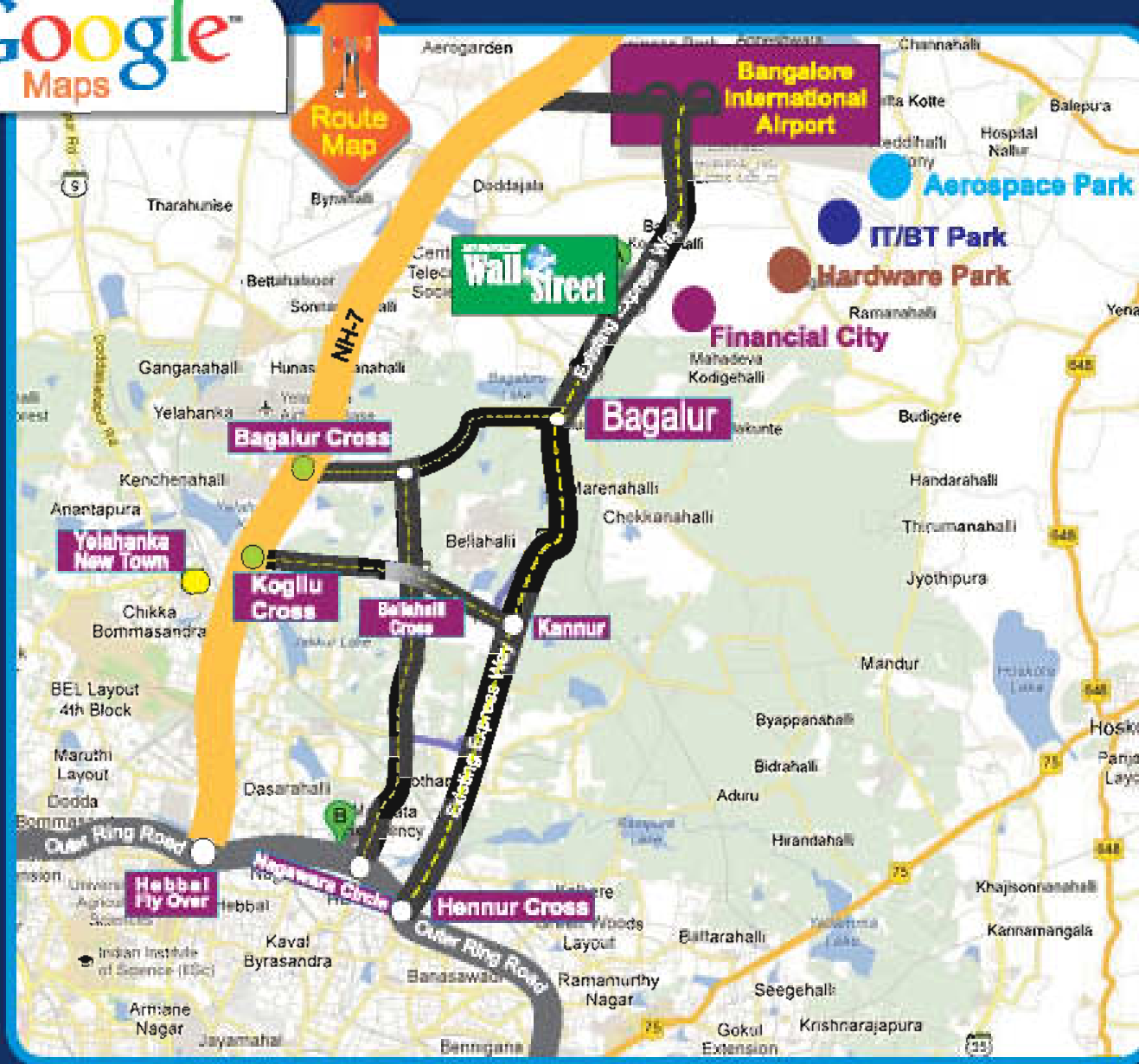












## The Surroundings

Place	Distance (In K.M)
International Airport	6
Express Highway	0.6
Hardware Park	1
Financial City	1.5
IT/BT Park	2
Proposed Bus Stand	0.5
Aerospace Park	6
Venkateswara College of Engg.	5.5
Delhi Public School	8
Brundavan Collage of Engg.	10
Yelahanka	13
Canadian Int.School	13
Manyatha Tech Park	18.3
Hebbal Flyover	20
Hennur Cross	23
M.G.Road	25.8
B,lore City Railway Station	28.3

Information courtesy : Google Maps



**MG BROTHERS**  
REAL ESTATES PVT LTD

(A Subsidiary of MGB Automobiles Pvt. Ltd.)

# 861, 1st Floor, G.K. Shivaswamy's Complex  
80 Feet Road, Opp. Indoor Stadium, 8th Block  
Koramangala, Bangalore - 560 095.  
Phone : 080-2570 3006 / 7  
e-mail : info@mgbrealestates.com  
website : www.mgbrealestates.com

BRANCHES • Trupti • Nellore • Vijayawada  
• Karnool • Yenmiganur & Chittoor

Exclusive Marketed by:

Dangovan's  
**BHOOMIKA**

PROJECTS INDIA PVT LTD

Door No. 85, 17th 'D' Cross, 38th Main  
Rose Garden, J.P. Nagar  
6th Phase, Bangalore - 560 078.

☎ : 96110 33977, 98451 47417

E-mail: info@bhoomikaprojects.com